



**E&J GreenPower Co., Ltd.**

VER:A

[www.ej-greenpower.com](http://www.ej-greenpower.com) [sales@ej-greenpower.com](mailto:sales@ej-greenpower.com)  
 TEL : 86--755-29064219 FAX : 86-755-61673196

DATE:09.08.20

Customer: SmartCore

# li-ion Polymer Battery Specification

**MODEL: EJ513446**

Prepared By/Date	Checked By/Date	Approved By/Date

**Note:** 1.Kindly please sign on the above and send it back to us if the sample is approved.  
 2.Kindly please contact us as soon as possible if the sample isn't approved. Thanks!

Customer confirmation	
Date	

History of revisions				
Edition	Description	Prepared by	Approved by	Date
A	First Edition	Marcoo	Jess Chan	2009-8-20

	<b>E&amp;J GreenPower Co., Ltd.</b>	VER:A
	<a href="http://www.ej-greenpower.com">www.ej-greenpower.com</a> <a href="mailto:sales@ej-greenpower.com">sales@ej-greenpower.com</a> TEL : 86--755-29064219    FAX : 86-755-61673196	DATE:09.08.20

**1. Scope**

This specification is applied to EJ513446 Manufactured by E&J GREENPWOER CO., LTD.

**2. Product Specification**

Table 1

No.	Item	Rated Performance		Remark
		Typical		
1	Rated Capacity	900mAh	Standard discharge ( 0.2C C <sub>5</sub> A) after Standard charge	
		800mAh		
2	Nominal Voltage	3.7V Mean Operation Voltage During Standard Discharge After Standard Charge		
3	Voltage at end of Discharge	2.75V Discharge Cut-off Voltage		
4	Charging Voltage	4.2±0.03V		
5	AC (1KHz) Impedance New Cell Max.(mΩ)	≤170mΩ		
6	Standard charge	Constant Current 0.5C <sub>5</sub> A Constant Voltage 4.2V 0.01 C <sub>5</sub> A cut-off Charge time : Approx 4.0h		
7	Standard discharge	Constant current 0.2 C <sub>5</sub> A end voltage2.75V		
8	Fast charge	Constant Current 1C <sub>5</sub> A Constant Voltage 4.2V 0.01 C <sub>5</sub> A cut-off Charge time : Approx 2.5h		
9	Fast discharge	Constant current 1 C <sub>5</sub> A end voltage2.75V		
10	Maximum Continuous Charge Current	1 C <sub>5</sub> A		
11	Maximum Continuous Discharge Current	1.5C <sub>5</sub> A		
12	Operation Temperature Range	Charge: 0~45°C		
		Discharge: -20~60°C		
13	Storage Temperature Range	Less than 1 year: -20~25°C		
		less than 3 months: -20~40°C		
14	Weight	Approx 16.0 g Bare Cell		
15	Pack Dimension	Length: Max.48mm		
		Width: Max. 34.5mm		
		Thickness: Max. 5.4mm		
Initial Dimension				

	<b>E&amp;J GreenPower Co., Ltd.</b>	VER:A
	<a href="http://www.ej-greenpower.com">www.ej-greenpower.com</a> <a href="mailto:sales@ej-greenpower.com">sales@ej-greenpower.com</a> TEL : 86--755-29064219    FAX : 86-755-61673196	DATE:09.08.20

### 3. Performance And Test Conditions

#### 3.1 Standard Test Conditions

Test should be conducted with new batteries within one week after shipment from our factory and the cells shall not be cycled more than five times before the test. Unless otherwise defined, test and measurement shall be done under temperature of  $20 \pm 5^{\circ}\text{C}$  and relative humidity of 45~85%. If it is judged that the test results are not affected by such conditions, the tests may be conducted at temperature 15~30°C and humidity 25~85%RH.

#### 3.2 Measuring Instrument or Apparatus

##### 3.2.1 Dimension Measuring Instrument

The dimension measurement shall be implemented by instruments with equal or more precision scale of 0.01mm.

##### 3.2.2 Voltmeter

Standard class specified in the national standard or more sensitive class having inner impedance more than 10kΩ/V

##### 3.2.3 Ammeter

Standard class specified in the national standard or more sensitive class. Total external resistance including ammeter and wire is less than 0.01Ω.

##### 3.2.4 Impedance Meter

Impedance shall be measured by a sinusoidal alternating current method(1kHz LCR meter).

#### 3.3 Standard Charge\Discharge

3.3.1 Standard Charge : Test procedure and its criteria are referred as follows:

$0.5C_5A = 450\text{mA}$

Charging shall consist of charging at a  $0.5C_5A$  constant current rate until the cell reaches 4.2V. The cell shall then be charged at constant voltage of 4.2 volts while tapering the charge current. Charging shall be terminated when the charging current has tapered to  $0.01 C_5A$  . Charge time : Approx 4.0h, The cell shall demonstrate no permanent degradation when charged between 0 °C and 45 °C.

##### 3.3.2 Standard Discharge

$0.2C_5A = 180\text{mA}$

Cells shall be discharged at a constant current of  $0.2 C_5A$  to 2.75 volts @  $20^{\circ} \pm 5\text{C}$

#### 3.4 Appearance

There shall be no such defect as flaw, crack, rust, leakage, which may adversely affect commercial value of battery.

#### 3.5 Initial Performance Test

Table 2

Item	Measuring Procedure	Requirements
(1) Open-Circuit Voltage	The open-circuit voltage shall be measured within 24 hours after standard charge.	$\geq 4.08\text{V}$
(2) AC Impedance Resistance	The Impedance shall be measured in an alternating current method (1kHz LCR meter)	$\leq 170\text{m}\Omega$

	<b>E&amp;J GreenPower Co., Ltd.</b>	VER:A
	<a href="http://www.ej-greenpower.com">www.ej-greenpower.com</a> <a href="mailto:sales@ej-greenpower.com">sales@ej-greenpower.com</a> TEL : 86--755-29064219    FAX : 86-755-61673196	DATE:09.08.20

	after standard charge at 20±5°C.	
(3) Nominal Capacity	The capacity on 0.2C <sub>5</sub> A discharge shall be measured after standard charge at 20±5°C.	Discharge Capacity ≥800mAh

3.6 Temperature Dependence of Capacity (Discharge)

Cells shall be charged per 3.3.1. and discharged @0.2C<sub>5</sub>A to 2.75 volts. except to be discharged at temperatures per Table 3. Cells shall be stored for 3 hours at the test temperature prior to discharging and then shall be discharged at the test temperature. The capacity of a cell at each temperature shall be compared to the capacity achieved at 23 °C and the percentage shall be calculated. Each cell shall meet or exceed the requirements of Table 3.

Table 3

Discharge Temperature	-10°C	0□	23□	60□
Discharge Capacity ( 0.2 C <sub>5</sub> A )	50%	80%	100%	95%

3.7 Cycle Life and Leakage-Proof

Table 4

No.	Item	Criteria	Test Conditions
1	Cycle Life (0.5 C <sub>5</sub> A)	Higher than 70% of the Initial Capacities of the Cells	Carry out 500cycle charging/ Discharging in the below condition. ♦Charge: Standard Charge, per 3.3.1 ♦Discharge:0.5 C <sub>5</sub> A to 2.75V ♦Rest Time between charge/discharge:30min. ♦Temperature:20±5°C
2	Leakage-Proof	No leakage (visual inspection)	After full charge, store at 60±3°C 60±10%RH for 1month.



**E&J GreenPower Co., Ltd.**

VER:A

[www.ej-greenpower.com](http://www.ej-greenpower.com) [sales@ej-greenpower.com](mailto:sales@ej-greenpower.com)  
 TEL : 86--755-29064219 FAX : 86-755-61673196

DATE:09.08.20

**4. Safety Test**

Table 5

Item	Battery Condition	Test Method	Requirements
Crush	Fresh, Fully charged	Crush between two flat plates. Applied force is about 13kN(1.72Mpa) for 30min.	No explosion, No fire
Short Circuit	Fresh, Fully charged	Each test sample battery, in turn, is to be short-circuited by connecting the (+) and (-) terminals of the battery with a Cu wire having a maximum resistance load of 0.1Ω.Tests are to be conducted at room temperature(20±2°C ).	No explosion, No fire The Temperature of the surface of the Cells are lower than 150°C
Short Circuit	Fresh, Fully charged	Each test sample battery, in turn, is to be short-circuited by connecting the (+) and (-) terminals of the battery with a Cu wire having a maximum resistance load of 0.1Ω.Tests are to be conducted at temperature(60±2°C ).	No explosion, No fire The Temperature of the surface of the Cells are lower than 150°C
Impact	Fresh, Fully charged	A 56mm diameter bar is inlayed into the bottom of a 10kg weight. And the weight is to be dropped from a height of 1m onto a sample battery and then the bar will be across the center of the sample.	No explosion, No fire

	<b>E&amp;J GreenPower Co., Ltd.</b>	VER:A
	<a href="http://www.ej-greenpower.com">www.ej-greenpower.com</a> <a href="mailto:sales@ej-greenpower.com">sales@ej-greenpower.com</a> TEL : 86--755-29064219    FAX : 86-755-61673196	DATE:09.08.20

Forced Discharge	Fresh, Fully charged	Discharge at a current of 1CmA for 2.5h.	No explosion, No fire
Nail Pricking (3mm)	Fresh, Fully charged	Prick through the sample battery with a nail having a diameter of 3mm and remain 2h.	No explosion, No fire

### 5.1 PCM Specification

Table 6

Item	Test Condition
Over charge protection	The battery should be charged under 4.28V/1C. The charging should be shut off when the internal cell voltage becomes more than the specified protection voltage.
Over discharge protection	The battery should be discharged with 1C, The discharging should be shut off when the internal cell voltage becomes less than the specified protection voltage.
Short protection	After rated charge, (+) and (-) terminals are connected with 10m mental resistor or equivalence.
Current consumption	Ordinary current consumption: consumption current of the protection circuit when internal cell voltage reaches 3.7V(Max:7μA)
General current consumption	Shut off current consumption: consumption current of the Protection circuit when internal cell voltage reaches 2.75v(Max:3 μA)

### 5.2 PCM Standard



**E&J GreenPower Co., Ltd.**

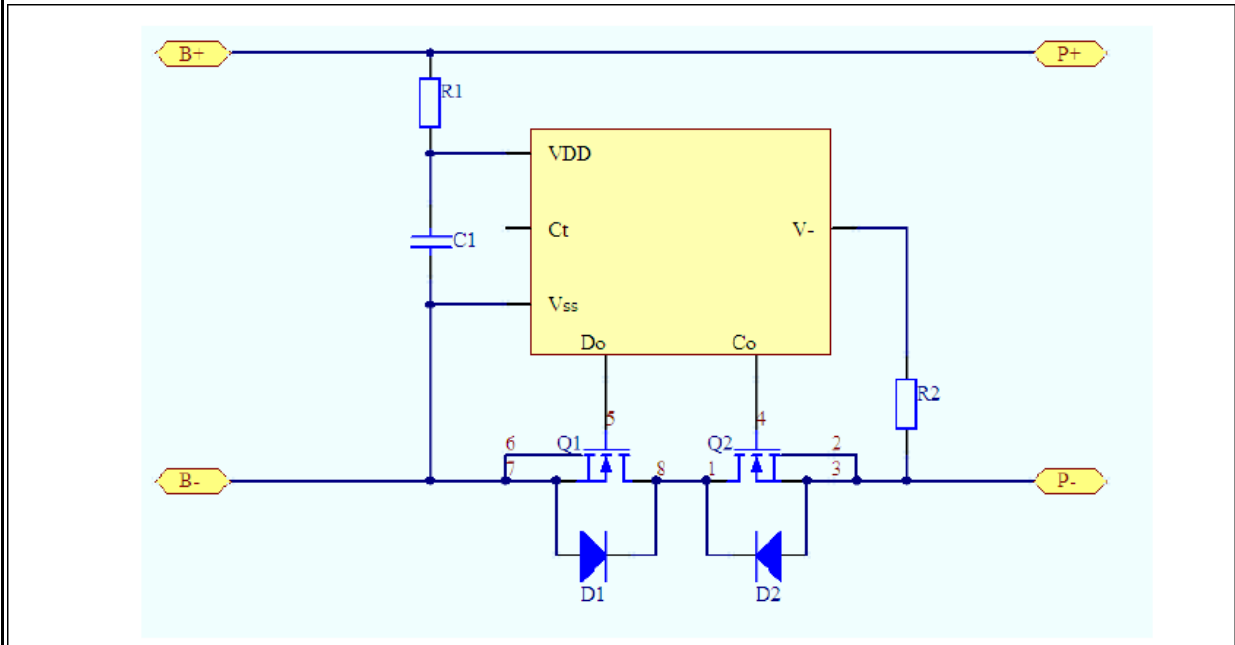
VER:A

[www.ej-greenpower.com](http://www.ej-greenpower.com) [sales@ej-greenpower.com](mailto:sales@ej-greenpower.com)  
 TEL : 86--755-29064219 FAX : 86-755-61673196


DATE:09.08.20

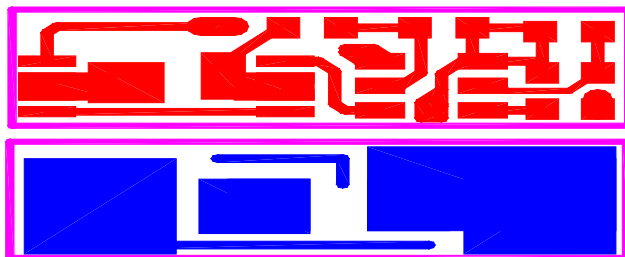
Symbol	Name	MIN	TYP.	MAX	UNIT
V <sub>DET1</sub>	Over-Charge detect Voltage	4.255	4.28	4.305	V
V <sub>DET2</sub>	Over-Discharge detect Voltage	2.95	3.00	3.05	V
I <sub>EC</sub>	Excess Current threshold	3.5	--	6	A
I <sub>DD</sub>	Supply Current	--	--	7	μA
R <sub>D</sub>	Internal Resistance in normal Operation	--	--	64	mΩ

5 . 3 Schematic diagram



5.4.1 PCB overlay

	<b>E&amp;J GreenPower Co., Ltd.</b>	VER:A
	<a href="http://www.ej-greenpower.com">www.ej-greenpower.com</a> <a href="mailto:sales@ej-greenpower.com">sales@ej-greenpower.com</a> TEL : 86--755-29064219    FAX : 86-755-61673196	DATE:09.08.20



## 6. Handling of Cells

### 6.1 Consideration of strength of film package

#### 1) Aluminium laminated film

Easily damaged by sharp edge parts such as pins and needles, comparing with metal-can-cased LIB.

#### 2). Sealed edge May be damaged by heat above 100 °C.

### 6.2 Prohibition short circuit

Never make short circuit cell. It generates very high current which causes heating of the cells and may cause electrolyte leakage, gassing or explosion that are very dangerous.

The LIP tabs may be easily short-circuited by putting them on conductive surface.

(Such outer short circuit may lead to heat generation and damage of the cell.)

An appropriate circuitry with PCM shall be employed to protect accidental short circuit of the battery pack.

### 6.3. Mechanical shock


LIP cells have less mechanical endurance than metal-can-cased LIB.

Falling, hitting, bending, etc. may cause degradation of LIP characteristics.

### 6.4 Handling of tabs

The LIP tabs are not exceedingly sturdy, especially the aluminium tabs for the terminal. Do not put much force on LIP tabs. (Aluminium tab may easily be torn off by shear force.)

Do not bend tabs unnecessarily.

	<b>E&amp;J GreenPower Co., Ltd.</b>	VER:A
	<a href="http://www.ej-greenpower.com">www.ej-greenpower.com</a> <a href="mailto:sales@ej-greenpower.com">sales@ej-greenpower.com</a> TEL : 86--755-29064219    FAX : 86-755-61673196	DATE:09.08.20

## 7. Notice for Designing Battery Pack

### 7.1 Pack toughness

Battery pack should have sufficient strength and the LIP cell inside should be protected from mechanical shocks.

### 7.2 Cell fixing

The LIP cell should be fixed to the battery pack by its large surface area.  
No cell movement in the battery pack should be allowed.

### 7.3 Inside design

No sharp edge components should be inside the pack containing the LIP cell.

### 7.4 Tab connection

Ultrasonic welding is recommended for LIP tab connection method.  
Battery pack should be designed that shear force are not applied to the LIP tabs.

### 7.5 For mishaps

Battery pack should be designed not to generate heat even when leakage occurs due to mishaps.

- 1) Isolate PCM (Protection Circuit Module) from leaked electrolyte as perfectly as possible.
- 2) Avoid narrow spacing between bare circuit patterns with different voltage.  
(Including around connector)
- 3) LIP battery should not have liquid from electrolyte, but in case If leaked electrolyte touches bare circuit patterns, higher potential terminal material may dissolve and precipitate at the lower potential terminal, and may cause short circuit. The design of the PCM must have this covered.

## 8. Notice for Assembling Battery Pack

Shocks, high temperature, or contacts of sharp edge components should not be allowed in battery pack assembling process.

8.1 Do not solder directly to LIP tabs. Do not bring heated tools such as soldering Iron close to LIP cells. Temperature above 80°C may cause damage to the LIP cell and degrade its performances.

8.2 .In case that the battery pack is fixed by ultrasonic welding, it is necessary not to apply too much ultrasonic welding power to LIP cell and electronic circuits such as PCM. Otherwise it may cause serious damage to the cells and electronic circuit.

## 9. Others

### 9.1. Cell connection

- 1) Direct soldering of wire leads or devices to the cell is strictly prohibited.
- 2) Lead tabs with pre-soldered wiring shall be spot welded to the cells.  
Direct soldering may cause damage of components, such as separator and insulator, by heat generation.

### 9.2. Prevention of short circuit within a battery pack

Enough insulation layers between wiring and the cells shall be used to maintain extra safety protection.

The battery pack shall be structured with no short circuit within the battery pack, which

	<b>E&amp;J GreenPower Co., Ltd.</b>	VER:A
	<a href="http://www.ej-greenpower.com">www.ej-greenpower.com</a> <a href="mailto:sales@ej-greenpower.com">sales@ej-greenpower.com</a> TEL : 86--755-29064219    FAX : 86-755-61673196	DATE:09.08.20

cause generation of smoke or firing.

**9.3. Prohibition of disassembly**

- 1) Never disassemble the cells  
The disassembling may generate internal short circuit in the cell, which may cause gassing, fining, explosion, or other problems.
- 2) Electrolyte is harmful  
LIP battery should not have liquid from electrolyte flowing, but in case the electrolyte come into contact with the skin, or eyes, physicians shall flush the electrolyte immediately with fresh water and medical advice is to be sought.

**9.4 Prohibition of dumping of cells into fire**  
Never incinerate nor dispose the cells in fire. These may cause explosion of the cells, which is very dangerous and is prohibited.

**9.5 Prohibition of cells immersion into liquid such as water**  
The cells shall never be soaked with liquids such as water, seawater, drinks such as soft drinks, juices, coffee or others.

**9.6 Battery cells replacement**  
The battery replacement shall be done only by either cells supplier or device supplier and never be done by the user.

**9.7 Prohibition of use of damaged cells**  
The cells might be damaged during shipping by shock. If any abnormal features of the cells are found such as damages in a plastic envelop of the cell, deformation of the cell package, smelling of an electrolyte, an electrolyte leakage and others, the cells shall never be used any more.  
The Cells with a smell of the electrolyte or a leakage shall be placed away from fire to avoid firing or explosion.

**10. Period of Warranty**  
The period of warranty is half of year from the date of shipment. E&J guarantees to give a replacement in case of cells with defects proven due to manufacturing process instead of the customers abuse and misuse.

**11. Storing the Batteries**  
The batteries should be stored at room temperature, charged to about 30% to 50% of capacity. We recommend that batteries be charged about once per year to prevent over discharge.

**12 Other The Chemical Reaction**  
Because batteries utilize a chemical reaction, battery performance will deteriorate over time even if stored for a long period of time without being used. In addition, if the various us conditions such as charge, discharge, ambient temperature, etc. are not maintained within specified ranges the life expectancy of the battery may be shortened or the device in which

	<b>E&amp;J GreenPower Co., Ltd.</b>	VER:A
	<a href="http://www.ej-greenpower.com">www.ej-greenpower.com</a> <a href="mailto:sales@ej-greenpower.com">sales@ej-greenpower.com</a> TEL : 86--755-29064219    FAX : 86-755-61673196	DATE:09.08.20

battery is used may be damaged by electrolyte leakage. If the batteries cannot maintain a charge for long periods of time, even when they are charged correctly, this may indicate it is time to change the battery.

**13.Note:**

Any other items which are not covered in this specification shall be agreed by both parties.

**14. Initial Dimension:**

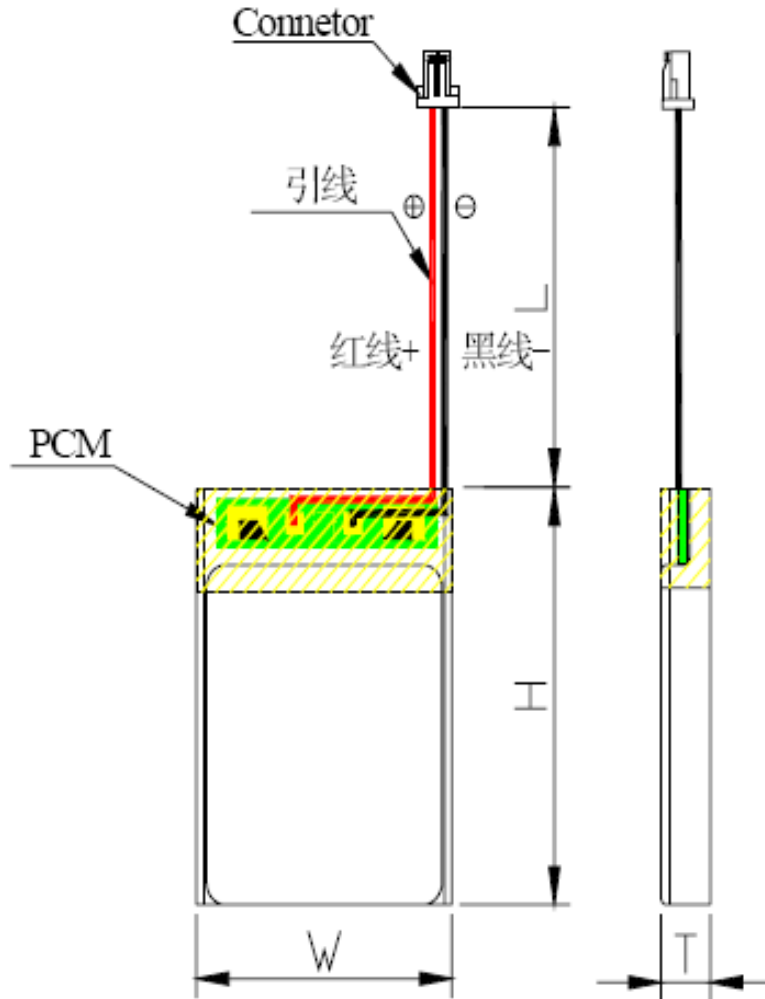


E&J GreenPower Co., Ltd.

VER:A

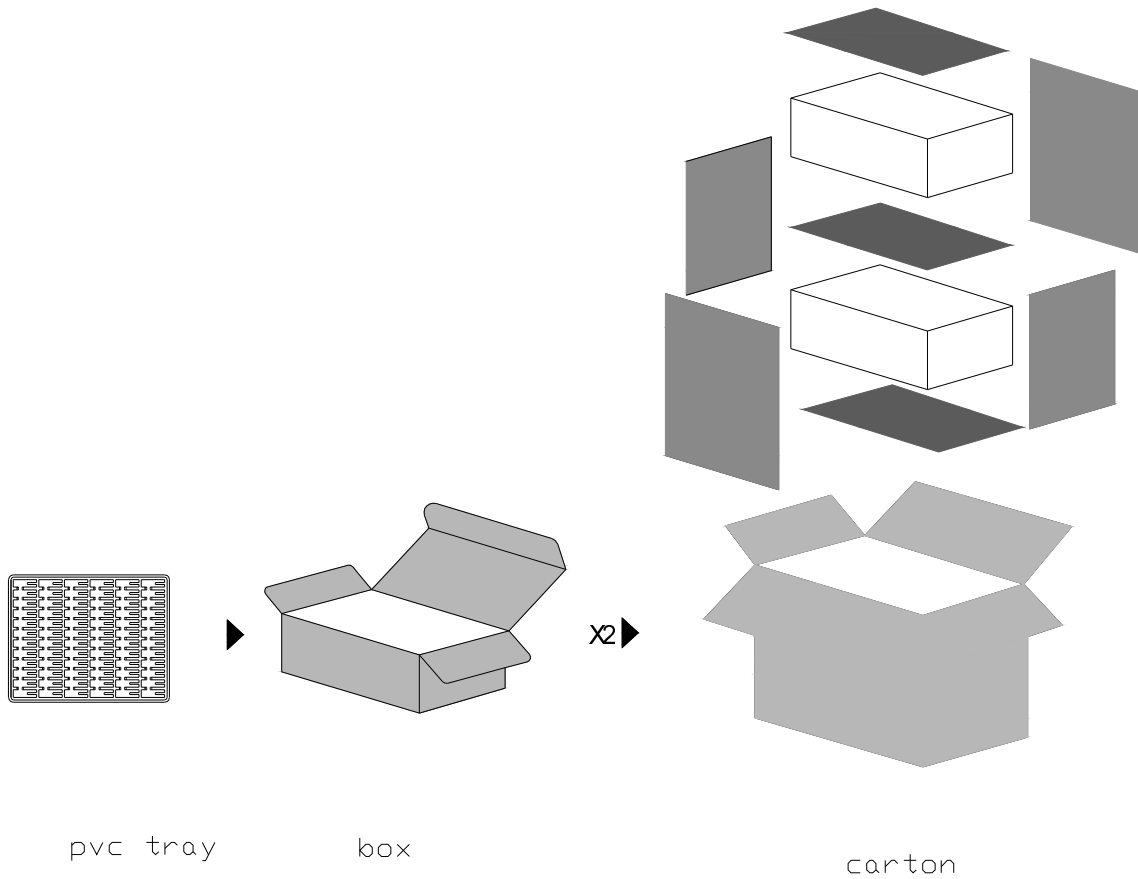
[www.ej-greenpower.com](http://www.ej-greenpower.com) [sales@ej-greenpower.com](mailto:sales@ej-greenpower.com)  
 TEL : 86--755-29064219 FAX : 86-755-61673196

DATE:09.08.20



T (厚度)	Max5.4	W (宽度)	Max34.5	H (高度)	Max48.0
L (线长)	70.0±3.0	Connector (插头)	DF13-2S-1.25C 正向	Wire(引线)	1571/26#
PCM(保护板)	SP-PCM-009			UNIT (单位)	mm

15. Packaging Method



E&J GREENPWOER CO., LTD		
REVISED	V1.0	
Specification of Lithium Ion Polymer Battery	Doc.No	Spec-Pack-1120
	Page	12/12